



Code	MME019
Brand	IMA
Model	COMBIMA / CONCEPT / II / 390 / B / R3

► **SQUARING AND EDGE BANDING MACHINE DOUBLE SIDED.** Automatic machine to apply the edge into straight profiles

GENERAL SPECIFICATIONS

- **Industrial machine with heavy-duty structure**
- **Machine able to work both as first or second position in a line**
- Max. working panel height with straight edge 8 - 60 mm
- Applicable banding material in coils: thin edge and PVC up to 3 mm
- Max. working width 3200 mm - running by THK guides

SYSTEM AND OPTIONALS OF THE PANEL HANDLING

- **Driving chain is running by roller bearings**
- **Top pression unit made by motorized rubbered belt**
- Top pression unit with adjustable height **in automatic by numerical control**
- Adjusting in continuous feeding speed **MASTER & SLAVE with regulation in automatic by numerical control 10 - 50 m/min**
- Central bar with lines of idle wheels to support the panels

WORKING UNITS ON THE SQUARING SIDE FOR EACH SIDE

- Anti-gluing unit made by 2 guns that spray liquid on the top and bottom part of the panel
- Antisplint milling hogging unit - automatic in/out intervention - in vertical position - motor power 4.4 KW (6.000 RPM)
- Top and bottom double hogging unit - motors power 13,2 KW (6000 RPM)

GLUING UNIT, INSERTION AND PRESSION OF THE EDGE FOR EACH SIDE

- **Multiple magazine for edge coils** with nr. 2 positions, to automatically change the edge type
- Hot-melt glue pot
- Spreading roller to regulate the quantity of applied glue
- Guillotine to cut the edge in coils
- Roller set to press the edge on straight profiles - nr. 1 + 4 pression rollers - **motorized regulation of depth position in automatic by numerical control**

WORKING UNITS ON THE EDGE BANDING SIDE FOR EACH SIDE

- End cutting unit with 2 motors to cut the excess edge on the front and back part of the panel - motors tiltable 0 / 25 degree
- Top and bottom rough trimming unit - motors power 1 KW (12000 RPM)
- Rounding unit multifunction **with regulation in automatic by numerical control.** This unit has a double functions: A) to trim and round off the excess edge B) to round the edge corners on the top and bottom part of the panel - motors power 0.66 KW
- Edge scraping unit for the edge superfinishing
- Glue scraping unit to remove the excess glue from the join between edge and panel
- Brushing unit with motors to clean and polish the upper and lower edge - oscillating system
- Milling shaping unit - placed on the right side of the machine - automatic in/out intervention - in horizontal position - motor power 4.5 KW (6.000 RPM)
- Free space to eventually add on request an additional working unit

CONTROL OF THE MACHINE AND ACCESSORIES

Code	Brand	Model
MME019	IMA	COMBIMA / CONCEPT / II / 390 / B / R3

► **Control and program system** ICOS OPEN with the following features: - pc - screen colour - CD-ROM reader - keyboard

► Adjustable separated command board to control the machine

NORM AND OPTIONAL FOR THE SECURITY

► **Security norme CE mark**

► **Safety and sound-proof enclosure cabinet of the working units**

► Aspiration system on the top part of the safety enclosure cabinet

Technical data will be checked when the machine will be in our warehouses

DOUBLE SIDE SQUARING EDGE BANDER

Page 3 / 5

Code	Brand	Model
MME019	IMA	COMBIMA / CONCEPT / II / 390 / B / R3



DOUBLE SIDE SQUARING EDGE BANDER

Page 4 / 5

Code	Brand	Model
MME019	IMA	COMBIMA / CONCEPT / II / 390 / B / R3



G



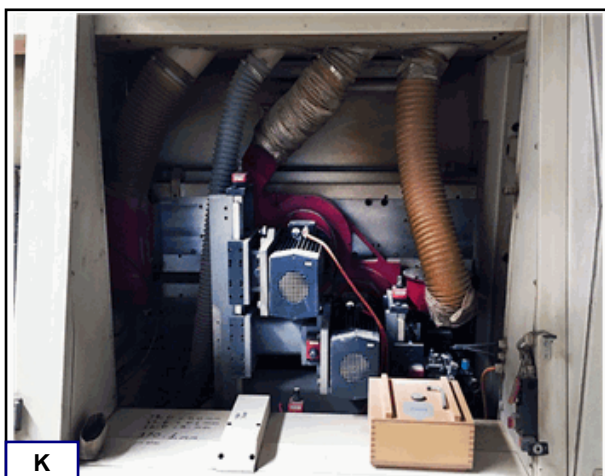
H



I



J



K



L

DOUBLE SIDE SQUARING EDGE BANDER

Code	Brand	Model
MME019	IMA	COMBIMA / CONCEPT / II / 390 / B / R3

