



Code	MMH005
Brand	HOLZMA
Model	HPL11/38/25/R/X - HQP11/22/38/R/X

NUMERIC CONTROLLED ANGULAR BEAM PANEL SAW WITH AUTOMATIC LOADING AND WITH AUTOMATIC STACKING

GENERAL SPECIFICATIONS

- ▶ **Industrial machine with heavy-duty structure**
- ▶ Useful working cutting width 3800 mm
- ▶ Useful working cutting length 2200 mm
- ▶ Max. main blade projection 125 mm
- ▶ **Double automatic lateral aligner with pneumatic cylinders.** The aligning cylinders are one before and one after the cutting line

FEEDING AND STACKING OF THE PANELS

- ▶ **Panel stacking: automatic, with nr. 2 HAU - A 25/8 front lifting table LIFTOMAT**
- ▶ **Panels loading: automatic, with rear lifting table** - table dimensions 3800 x 2200 mm
- ▶ **Loading of the panels row on the lifting table through:** - nr. 2 motorized roller conveyor for lateral preloading on left side
- ▶ Supporting table under the pusher carriage equipped with idle rollers to avoid any scratching on the panels

FRONT SUPPORTING TABLES

- ▶ Nr. 2 fixed front tables with with additional guide - covered by bachelite - **air blowing device**

SAW CARRIAGE TECHNICAL DATA

- ▶ Speed of saw carriage: - forward 5-150 m/min. - back 150 m/min
- ▶ Carriage with main blade and scoring saw units
- ▶ Main blade - max. tool diameter 450 mm - motor power 18 KW + 18 KW
- ▶ Scoring saw - max. tool diameter 180 mm - motor power 2.2 KW + 2.2 KW
- ▶ "Quick change" system of the saw blades POWER - LOC

PUSHER TECHNICAL DATA

- ▶ Motorized pusher carriage - nr. 4 + 8 grippers to clamp the package of panels
- ▶ Speed of the carriage: - forward 10-80 m/min. - back 130 m/min

CONTROL OF THE MACHINE AND ACCESSORIES

- ▶ **Control and program system** POWER CONTROL + SOFTWARE CADMATIC with the following features: - **pc - screen colour - CD-ROM reader** - keyboard
- ▶ Adjustable hanging command board to control the machine
- ▶ Separated electrical cabinet

NORM AND OPTIONAL FOR THE SECURITY

- ▶ **Security norme CE mark**
- ▶ Protection grids installed on the machine
- ▶ **Automatic system to out-put the wood wastes**

Technical data will be checked when the machine will be in our warehouses

Code
MMH005

Brand
HOLZMA

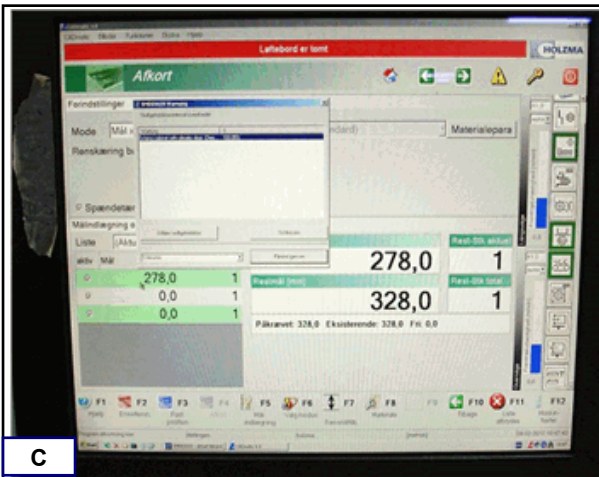
Model
HPL11/38/25/R/X - HQP11/22/38/R/X



A



B



C



D

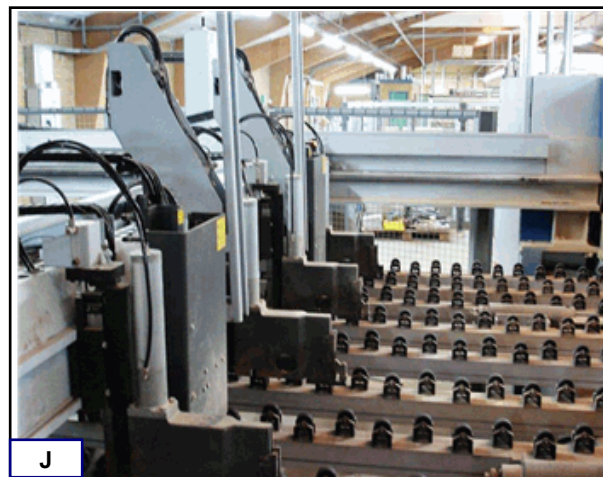
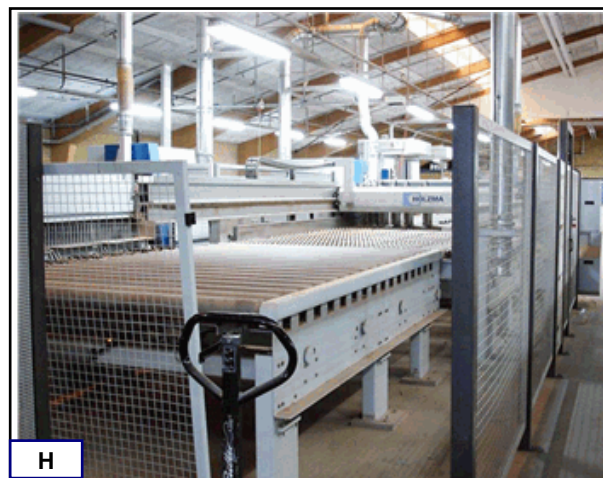


E



F

Code	Brand	Model
MMH005	HOLZMA	HPL11/38/25/R/X - HQP11/22/38/R/X



NUMERIC CONTROLLED ANGULAR BEAM PANEL SAW

Page 4 / 4

Code	Brand	Model
MMH005	HOLZMA	HPL11/38/25/R/X - HQP11/22/38/R/X

